

BE INSPIRED WITH OUR HOME IMPROVEMENT IDEAS

# HOME *edit*

BY **County**  
THE HOME IMPROVERS



*Your*  
**FOREVER  
HOMES**

**REAL HOME TRANSFORMATIONS,  
INSIDE AND OUT**

**Fresh home updates**



*Front doors to  
make an entrance*



**BEAUTIFUL  
BI-FOLDS**

**ENVISAGE  
FLUSH WINDOWS**

**ENERGY  
EFFICIENT  
DOORS**

*Easy ways to revive  
your space this season!*



# WHAT YOU'VE BEEN SHARING THIS SEASON

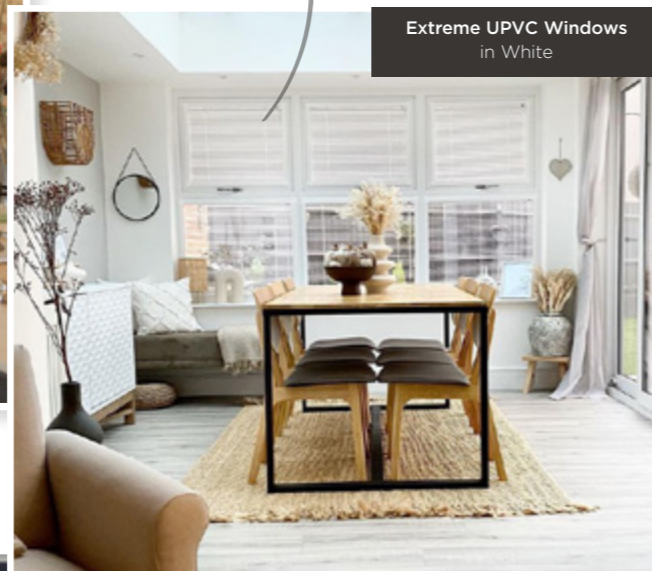
A stunning selection of our home installations, in your homes, **as you've been liking over on social.** Take some inspiration from the homes of just a few satisfied (and very stylish) customers.



Extreme UPVC French Doors in Grey

*"This is exactly what we wanted."*

The garden and the inside work seamlessly together.



Extreme UPVC Windows in White

*"It was fantastic!"*

They came and did it within just four hours - from start to finish.



Extreme Solid Core Door in Anthracite Grey

*"Totally in love with it."*

The front of the house is looking much more welcoming already!



EXTERIOR

Envisage Flush Windows in Hazy Grey

*"The timeless timber look."*

Our windows have transformed the look of the house - a breath of fresh air! We've achieved a sleek, traditional look in stunning hazy grey on the outside, with white on the inside frames to blend with the walls.



INTERIOR

## Customer HOMES

STEP INSIDE...



We know that you love having a good look around other people's houses, and it's one of our greatest joys too! You will find great inspiration for your home improvement project by seeing how we have enhanced some of our other customers' homes. They're all real-life examples that have been given a new lease of life, added value and fulfilled people's dreams.

Ranging from ultra-modern spaces to bold, colourful family homes, there's something for everyone. We hope you find lots to inspire you.

### FOUND THE PERFECT PRODUCT?

For further information on the fabulous range of home improvement products available - **request one of our brochures online today.**

Request your **FREE QUOTE**



**LIKE WHAT YOU SEE?**

Your ideal home update could be closer than you think! Let's get going. Get a free quote **from our website.**

# 'We've injected COUNTRY CHARM'

GREY ENVISAGE FLUSH WINDOWS & FRENCH DOORS

Shared with his partner, Jordan, two dogs, and a flock of chickens, Tom is delighted with how the enhancements block out road noise, keep in warmth and have improved the aesthetic of the cottage.



## THE DETAILS

### ABOUT ME

I'm Tom Quinn, 33, a Fine Art College teacher and I live here with my partner Jordan, 30, head of podcasts at Agency11, and our dog Milo.

### OUR HOME IS

A 1920s detached cottage. We've lived here for 5 years.

### WHEN WE MOVED IN

The cottage windows and doors were in a state of disrepair. The brickwork needed refining and there were holes in the walls - but we knew it had potential!

### THE WINDOWS AND DOORS

We've complemented the original style with Envisage flush style windows and created a light-filled living space in the kitchen.

Formerly lived in by his great grandparents, grandad and three younger brothers, this 1920s cottage has been in Tom's family for 100 years. Now the new custodian of the property, Tom wanted to renovate the building, but in a way that was true to its original character.

## A faithful, modern update of a historic 1920s cottage for its new custodian

Tom's desire to have the kitchen flow into the garden for entertaining purposes and to be able to see as much of the outdoors as possible, led to the kitchen window being converted into French doors. They have completely changed the functionality of the space.

Characterised by a simple clarity of design and geometry, our Envisage Windows bring the traditional timbered style of the late middle ages in line with the 21st century, offering exceptional performance, and insulation. Because it maintains the original proportions used by carpenters for hundreds of years, the flush casement can be easily adapted to accommodate a wide variety of period and contemporary hardware or colours, which means that it can give the best finish to suit the property. >>



### A NEW LEASE OF LIFE

We're sure Tom's ancestors would be very proud of how he is continuing the legacy of the cottage.



### How to... CREATE CONTINUITY

- \* Creating flow between the rooms in your house helps the space feel put together. Even if a lot is going on, repeating recognisable accents will ensure your design feels cohesive.
- \* Identify a colour scheme. Choose a palette of three key colours and decide on some accent shades or patterns. Paint the walls, panelling, and even the radiators the same colour as the inner window frame for a continuous flow.
- \* Choose a theme for accessories. It will help to finish your look and complement your chosen style.



**IDEAS TO STEAL**

Don't be afraid to mix bold patterns and statement colours.

### FROM START TO FINISH IN 4 HOURS

>> Envisage windows perfectly matched the profile of the original windows...

An old photo from the 1950s provided the design team with a blueprint for the windows. Collectively, it was identified that the flatness of our exclusive Envisage flush casement window, and the fact that its coloured bars and authentic monkeytail handles could be a hard grey in colour, made it the ideal contemporary substitute. This grey adds a great mood to the house, inside and out.

*The 1950s cottage blueprint*



**INTERNAL**



**EXTERNAL**

"It was a fantastic process throughout. All the hard work was done behind the scenes, and the fitters were really friendly and incredibly quick."



*Authentic monkeytail handles*

*Flush, clean lines and sleek aesthetics*

# First impressions count

## EXTREME SOLID CORE DOOR AND EXTREME UPVC WINDOWS

James and Harriet purchased their 4 bedroom house around three years ago and were becoming increasingly frustrated with their draughty and outdated windows. More than one of their units had blown, making them cloudy and the view obstructed by condensation. They'd also been subject to a break-in during their first year in the house, so they were determined that the security and safety of their family were paramount in their choice of new windows and doors. >>

A recent study by MyGlazing.com found that 65% of homeowners and renters felt an attractive exterior was essential when viewing a house.



Solid, robust security with a contemporary finish



### SUPER SECURE

A dramatic new appearance for their home and feeling safe and secure with their young family.

### Extreme security, modern style

>> Having explored all the options, the Hardys were convinced that Extreme UPVC windows had the added security benefits they were looking for.

Modern styling was also super important - Harriet had been admiring various neighbours' new windows during lockdown and was convinced she wanted a contemporary anthracite grey statement appearance. The couple's front door was also really draughty and they were concerned about the robustness of the lock in the event of another break-in.



### FRONT OF HOUSE

#### ABOUT US

We are Harriet Hardy, a nutritionist and James Hardy, a data storage consultant. We have two boys, aged 4 and 9.

#### OUR HOME IS

A traditional style four bedroom detached property built in 1995.

#### WHEN WE MOVED IN

Soon after we moved in, we were broken into and were devastated. It made us feel nervous in our new home and we started considering how to add additional security.

#### THE WINDOWS AND DOORS

We wanted a modern and stylish alternative to our white UPVC door and windows, and had been admiring our neighbours' grey windows as they stand out on the street. Now, it's our front of our house turning heads!

☆  
*Request your*  
**FREE QUOTE**  
Like what you see?  
Get your windows and doors quote by **visiting our website.**

OUR DOOR AND WINDOWS MARRY TOGETHER PERFECTLY TO REALLY MAKE AN ENTRANCE!



**Our door security stands up**

>> If security is your main concern, we've got you covered! The 48mm core in the Extreme Solid Core Door gives more protection of a foam filled composite door. It has an Extreme locking system, with auto-engage locking, to keep intruders well and truly at bay.

Style your door with contemporary glazing and that all-important door knob for a minimalist finish.



*Mix your colours!*

Dramatic on the outside, muted on the inside!

**How to... DISPLAY YOUR DOOR**

- \* Ensure your door looks inviting to guests with the addition of a doormat at your entrance. You can alternate it for different seasons and it will help set the mood you want visitors to feel upon their entry, as well as being extremely practical.
- \* Adding some vibrant, colourful potted plants right outside of your front door will emphasise the design to outside eyes - make sure they're nicely in symmetry with it.
- \* Bring your door to life at night with some elegant wall lights. If they have dimmable switches, you can dictate how brightly you show off your door.



*So much choice!*

Try obscure or decorative glass for a touch of personality - and make your door even more unique.



**GET CREATIVE WITH COLOUR**

We have the staple, go-to composite door colours such as blue, red, black and white, as well as a wide selection of more contemporary favourites including Chartwell Green and Anthracite Grey. If you're looking for a composite design that replicates a timber effect then check out our oak and darkwood finishes which share all the aesthetic characteristics of a wood effect door.

If you'd like a different colour inside and out, no problem! The choice is yours.





**“It’s a wonderful hub of the home. We certainly managed to achieve what we set out to do – all to our budget.”**



## THE DETAILS

### THE OWNERS

Stephen and Kate Chadwick

### PRODUCT FEATURES

A contemporary orangerie with skylights, thermal pelmets and added spotlights. Combined with Extreme UPVC casement windows and bi-fold doors.

### OUR HOME IS

A four bedroom detached property. We’ve lived here since 2006. Back then it was a new build, and we moved in with our young family. Over time, we noticed the need for a more free-flowing space. Our now (grown-up) children love coming over to enjoy the new space!

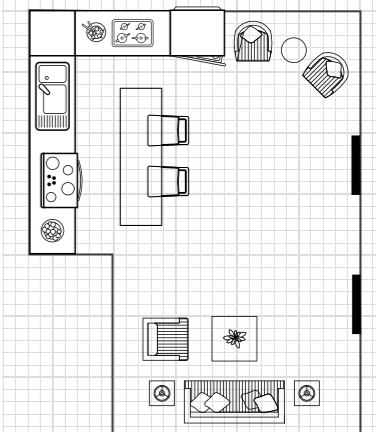
**“We went for a minimalist look but it also had to be very practical as we’re entertaining all the time! Our designer came up with ideas we could afford...”**

# All about that space

**S**tephen and his wife Kate wanted to knock through their modest kitchen and separate dining room to create an open plan dining space and living area.

It was really important to them to create a look that really blended with their current exterior to feel like a ‘proper’ extension, whilst still adding as much natural light as possible. The skylights they chose, combined with cosy pelmets with added spotlights, mean they have maintained a beautiful view of the sky without having to compromise on warmth and comfort.

## FLOOR PLAN



# TOP 5 TRENDS

*This season*

## 1. Minimalist Art

A minimalist interior by definition won't have many artworks on the walls, so selecting the right ones is all the more important. You'll generally want a single artwork on an otherwise bare wall to provide a focal point for the room. It could be a large canvas, but sometimes a relatively small picture in a simple frame is just as effective.



## 2. Botanic Boutique

The application of nature within our interiors has transformed through the years - from the increased popularity of plant life within mid-century homes to recent trends of bold palm prints or boho terrariums, there are no limitations or restrictions within a botanical style. A varied source for colour and pattern inspiration, botanicals add individuality and character to your space.



## 3. Coordinating Colours

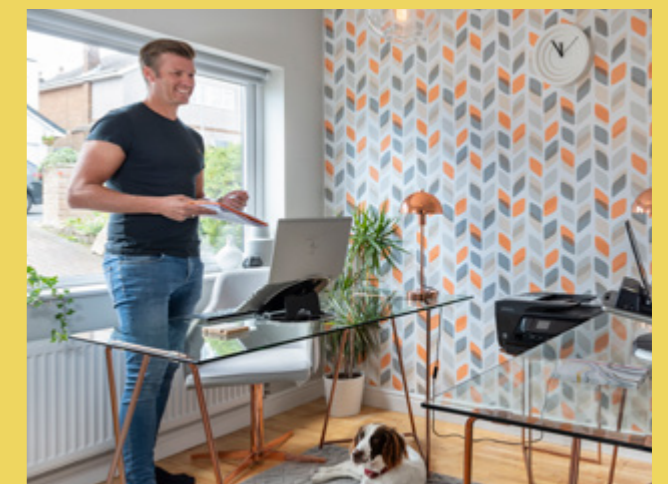
The trend for coordinating colours is a great way to make everything in our homes feel more stylish. In upholstery, greys and blush are still popular along with rich navy blues and yellow/gold colours. Investing in a velvet sofa is a great way to get the look. However, if you're not ready to take that plunge, opting for a velvet cocktail chair or glamorous lighting fixture will offer affordable updates to your living room.

*Inject a core pop of colour for instant uplift!*



## 4. Shutter Styling

Shutters seem to be timeless but have made a comeback recently. Versatile and durable, they can be made to fit almost any size and shape of window, offering a classic, New England character to a modern home. Both practical and beautiful, shutters provide greater control over privacy and light levels in your home, with complete privacy when closed.



## 5. Home Office Trends

It's the new-found room of the modern home, with many of us having a space allocated for productive working. When it comes to home office design schemes, the possibilities are endless. You can transform an unused closet with a few space-saving design tricks or go bold by outfitting an entire room with graphic wallpaper, standout furniture, and colourful accessories.





### THE DETAILS

#### THE OWNERS

Mr & Mrs Cook

#### PRODUCT FEATURES

The Cooks chose Anthracite Grey Extreme UPVC Windows to modernise the house, plus 6 pane Eclipse Aluminium Bi-fold doors to the rear of the orangery, and a large picture window on the front.

#### MATERIALS

Eclipse Bi-Fold Doors, Extreme UPVC Windows & Orangery with an UltraRoof

**“The installers were efficient and tidy on every part of the project. We can't believe how much we're saving on our energy bills - it's so toasty now!”**

# Modern meets traditional

**M**r and Mrs Cook asked us to update and enhance the front elevation of their property in keeping with the traditional design of their modern property - A total refresh both inside and out!

Being located in a green belt area made the project particularly interesting and it required many bespoke elements, including sympathetic window design and a free-flowing connection to the garage roof, as well as combining an UltraRoof with real slate. The whole property has seen many passers-by and the couple regularly get complimented on its character and charm.

☆  
*Request your*  
**FREE QUOTE**

---

**LIKE WHAT YOU SEE?**  
Your ideal home update could be closer than you think! Get a free quote **from our website.**



*A seamless connection to the outdoors*





“GIVEN THE ISSUES WE’D HAD INITIALLY WORKING WITH ANOTHER ARCHITECT, IT WAS A BREATH OF FRESH AIR COMPLETING OUR PROJECT”

*Creating a truly interesting aesthetic*

>> The couple wanted us to achieve a grand look on the front elevation without spoiling its original character. The roof design and connection to the garage were very unique, as was getting the large glass panels in. It took time to design a concept that they and the Conservation Officer were both happy with. Ultimately, it was our knowledge and design expertise that proved crucial in getting the development off the ground.

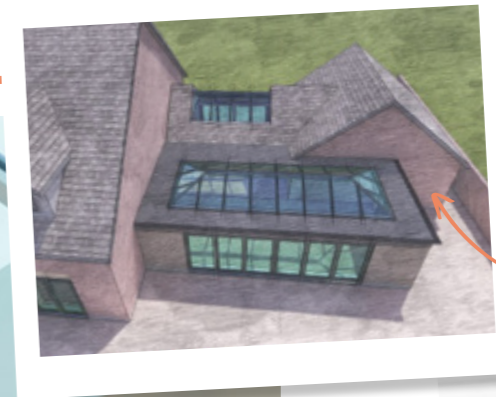
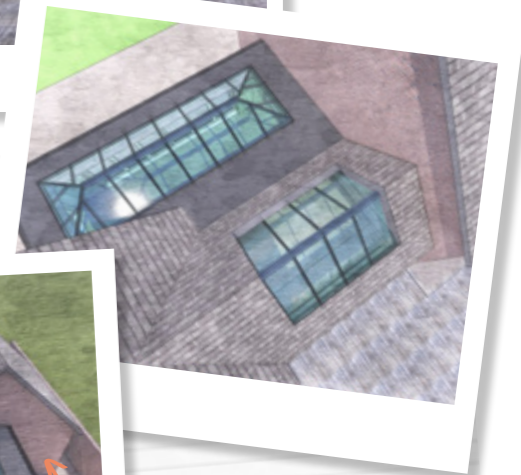


*Floor to ceiling glazing!*

Rbespoke to your property

**AN INSTALLATION WITH A GENUINE *WOW factor!***


- \* Due to the property being in a green belt area, the planning had to be meticulous.
- \* We gave a Conservation Officer oversight of the design throughout the entire planning process.
- \* Though both the survey and aluminium design was complicated, we delivered on time and on budget to specification.



*We'll bring your vision to life!*



>> Our bi-folding doors have created a seamless indoor-outlook link for this impressive home gym. The homeowners were a fan of open-plan living, and the doors have contributed to a brighter, wider space with no barriers to sunlight. You can be confident that our Bi-folding doors are built to last, ensuring you can enjoy nothing short of excellence for years to come.

  
*Request your*  
**FREE DESIGN APPOINTMENT**  
 Discuss and visualise your plans with one of our in-house designers by **visiting our website.**



## THE DETAILS

### THE OWNERS

The Cloughs

### BRIEF

An open plan family kitchen-living area.

### PRODUCT FEATURES

Solid roof extension with Velux windows, combined with Extreme UPVC windows and French doors with glazed panels either side.

### MATERIAL / RANGE

Extreme UPVC

### COLOUR

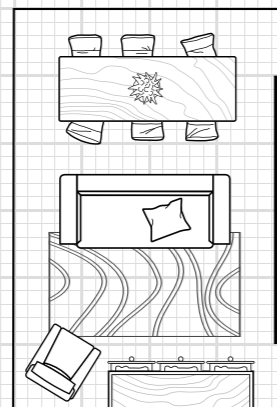
White inside and out

# Simply stunning

Creating a cosy living space that fully opened out to the beautiful garden was the end goal for Mr & Mrs Kendall.

Spending much of their leisure time tending to the garden, they wanted to make the most of the view with fully opening Eclipse Aluminium bi-folding doors to create a seamless outdoor-indoor link. Anthracite Grey set the contemporary theme for the extension for a really modern look to the exterior, combined with textured furnishings inside for added comfort.

## FLOOR PLAN



## THE DETAILS

### THE OWNERS

The Kendalls

### PRODUCT FEATURES

Contemporary orangery with Loggia columns, insulated pelmet with added spotlights, Extreme UPVC windows and Eclipse Aluminium bi-folding doors

### MATERIAL / RANGE

Orangery roof with solar control glazing, Extreme UPVC windows and Eclipse Aluminium bi-folding doors.

### COLOUR

Outer: Anthracite Grey  
Inside: White

★  
*Request your*  
**FREE QUOTE**

by visiting our website

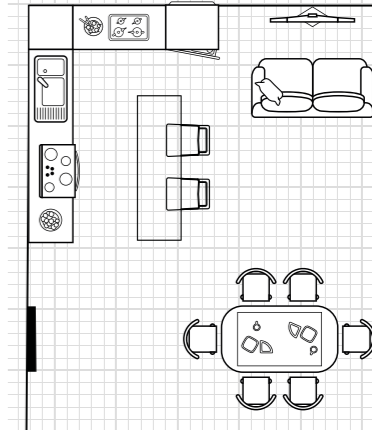
# A cutting-edge kitchen



With two young children and a busy working lifestyle, the Cloughs wanted to extend their home to incorporate an open plan kitchen-living area.

Working with a limited budget, they were really keen to spread the cost over an extended period without having to compromise on their ideas. Their ideal outcome was a practical space for everyday living, but that also felt luxurious and modern – perfect for relaxing and having friends over (of all ages!)

## FLOOR PLAN





# DOOR *decisions*

Should I buy a UPVC door or a Composite door?  
We look at the key differences and benefits.

## UPVC DOORS



- \* It's no surprise that an Extreme UPVC door is so tough, despite its slimmer profile. The door unit is produced by encasing an insulated steel frame in unplasticized polyvinyl chloride (UPVC). It is unplasticized so that the plastic isn't softened and retains its strength.
- \* With a very notable sheen to it, it costs less to buy an Extreme UPVC door, but with no slight on quality. It offers incredible strength and will provide an outstanding standard of thermal efficiency, keeping your heating costs low.
- \* You hardly need to lift a finger to clean the door either. Just wipe the frame down with a wet cloth to remove any dirt masking the coloured finish.



## COMPOSITE DOORS



- \* There's a reason why a composite door is so-called and it's because a number of different materials are meshed together to create the door frame, including PVC, wood, insulating foam and GRP (Glass Reinforced Plastic).
- \* This amalgamation of materials also explains why a Frontline Composite door is much thicker and heavier than your ordinary frame. The thermal insulating qualities of the materials also make Frontline doors great for keeping homes toasty.
- \* Certain woodgrains could easily make you confuse a Frontline Composite door for a timber door if you're a fan of wood.
- \* They carry a higher price tag than Extreme UPVC doors, but Frontline Composite doors easily justify the extra cost.

Request your  
**FREE QUOTE**



Remember, price and value are not the same thing when looking for a new door. See your options and get a quote today **by visiting our website.**

# Windows of OPPORTUNITY

Ramp up the kerb appeal and find the perfect product to complement your home.  
There's more to explore in our extensive range of styles, materials and colours.  
Here's a whistle stop tour of our best sellers.



**1 FLUSH FEATURES**  
If you're a style seeker, then Envisage is for you. Neat sashes sit flush to the frame for understated elegance. Performance-wise Envisage punches above its weight. Just perfect.



**2 HOW TO HANDLE IT**  
Whether you're matching handles to a modern new build or a traditional cottage property, our hardware range is well-positioned to meet even the most unique of needs.



**3 SEAMLESS STYLING**  
Choose a design of windows that blend harmoniously into your home. Georgian windows bring charisma to both modern and traditional homes as their distinctive bars make a strong style statement.



**4 BAY TRADITION**  
With bags of character, our selection of bay and bow windows are sure to be a real feature of your room - creating the illusion of space and depth by allowing more light into your home.



**5 THE SLIDER STYLE**  
Don't lose the authentic charm that characterises your home. The sliding sash incorporates modern strength and practicality, and delivers it with a traditional timber look.



**6 CONSISTENCY IS KEY**  
With Envisage, you can select from a wide range of openings, colours, finishes and accessories that will complement your home and make a real stand-out impression with your neighbours!

# ASK THE EXPERT

Our team of professional product designers, installers and even manufacturers, answer your most common questions....

## Q WHAT'S THE DIFFERENCE BETWEEN AN EXTREME SOLID CORE AND A FRONTLINE COMPOSITE DOOR?

A

"A standard Frontline Composite door is generally 44mm in depth and is filled with foam. Its outer skin is made from GRP (commonly known as fibreglass) and is relatively lightweight.

An Extreme Solid Core Door is 48mm in depth and is made from multiple layers of laminated timber, making it much more robust and durable than foam filled doors (perfect if safety and security is a particular concern). Its outer skin is also made from UPVC which means you can achieve a perfect colour match with your door's outer frame."



## Q HOW CAN I MEASURE UP FOR NEW WINDOWS AND DOORS?

A "Simply measure your windows and doors from plaster to plaster. We'll be happy to send you a simple 'how to' video and don't worry, our pricing builds in a tolerance of +/- 10cm and we'll always send a surveyor out to measure up if you decide to go ahead."

## Q WHAT CAN I DO ABOUT CONDENSATION ON MY WINDOWS?

"To combat condensation on your windows, try to leave your windows in the night ventilation position as often as possible, open the roof vent (if fitted), and as a top tip, try to avoid any close-fitting curtains."

## Q WHAT AFTERCARE WILL I RECEIVE FOR MY WINDOWS AND DOORS?

A "We're with you for as long as your product remains yours. With a fully comprehensive guarantee, we'll be on hand to service your requirements should anything go wrong with your windows & doors. Our guarantee, unlike many others, covers moving as well as non-moving parts so you can rest assured you're fully protected. So sit back, relax and enjoy your home."



**?** GOT A QUESTION?

Ask our experts yourself via social media

**f**

# All under one roof.



## FREE DESIGN SERVICE

WORTH £500

Why not book a Free Online Design Appointment with one of our professional in-house designers? We can help you get the ball rolling whenever you're ready.



## 3 options TO SUIT YOU

In order to help us create your ideal proposal, we'll need to gather a few more details from you. How we meet is entirely up to you - we're totally flexible to suit your lifestyle.

1.

### VIA VIDEO

Short on time? We can speak to you via video link at a time to suit you, and using our very latest design software, can specify and create the perfect products to suit your home on screen, giving you an instant price from the comfort of your sofa.



2.

### AT HOME

The best place for us to really help you with your home improvement aspirations is, of course, in your home. If you're comfortable with a home visit, one of our specialists will visit at a time to suit you.



3.

### IN THE SHOWROOM

Not sure exactly what you want? Then we have the perfect setting for you to be inspired! Pop along to a showroom and you'll be able to see, touch and feel a huge choice of windows, doors and home extensions and really get a feel for what you like.



*Visualise your space from concept to completion*



☆ *Let's get started!*

Book your FREE design appointment at a time and place to suit you

VISIT OUR WEBSITE



REQUEST YOUR QUOTE



DISCOVER OUR RANGE



VISIT OUR SHOWROOM



*Like what you've seen?*

Request your **FREE QUOTE**

Book a **FREE DESIGN APPOINTMENT**

Discover our full product range

Find your nearest **SHOWROOM**

Take the next steps **here**

**WWW.COUNTYTHEHOMEIMPROVERS.CO.UK**

HOME *edit*

BY **County**  
THE HOME IMPROVERS